

The 'Dre Emmanuelle de Wolff & Kiwanis' flat

FOR THE PARENTS OF CHILDREN
IN SION HOSPITAL



This guide will provide you with useful information for your stay in the 'Dr Emmanuelle de Wolff & Kiwanis' flat for the parents of children in Sion Hospital.

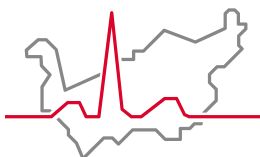
Hospital Centre of the French-speaking Valais Region



Paediatrics Department



Neonatology Section



Hôpital du Valais
Spital Wallis

www.hopitalvs.ch | www.spitalvs.ch

Impressum

Editor: Valais Hospital, General Management, Sion

Author: Paediatrics Department, Children Pool, CHVR

Photos: Valais Hospital, Fotolia

Ref.: 638 510 – 03/2025

SUMMARY

Welcome 4

Introduction 5

 Explanation of the concept 5

Procedure for your visit 6

 Admission 6

 End of stay in the flat 6

The 'Dr Emmanuelle de Wolff & Kiwanis' flat 7

 Cost and invoicing 7

 Location 8

 The flat 9

 Flat's plan 10

Rules and instructions 11

 Right of access 11

 Maintenance and cleaning 11

 Waste management 11

 Material damage 11

 No smoking permitted 11

 Liability in case of theft 11

Contacts 112

WELCOME

Dear parents,

Your child is hospitalised at the Sion Hospital. The healthcare personnel of the Paediatrics Department in Children Pool will do everything they can to make sure that he or she gets better as soon as possible.

During this hospital stay, your presence at your child's side is very important. Thanks to the support of the Fondation Doctoresse Emmanuelle de Wolff, the Kiwanis Club Sion Valais and the Kiwanis International Foundation, the Valais Hospital has a parental accommodation centre available, which is just a short 7-minute walk from the Sion Hospital.

For any questions or further information regarding your child's hospital stay or the flat itself, please see the contacts page on the back of this brochure.

We hope that your stay is as pleasant as possible, and we send our best wishes for your child's speedy recovery.

Paediatrics Department CHVR

Neonatology Section CHVR

With our deepest gratitude for the support of:



FONDATION
DR EMMANUELLE DE WOLFF



Kiwanis®

INTRODUCTION

Explanation of the concept

The 'Dr Emmanuelle de Wolff & Kiwanis' flat provides reasonably-priced temporary accommodation for parents travelling from a great distance whose child is staying at the Sion Hospital.

Parents are provided with a comfortable space which is located just 7 minutes' walking distance from the Sion Hospital, to sleep, prepare meals and, above all, be close to their child. The flat is also a place for sharing and be connected to other parents in a similar situation. Each bedroom has a private bathroom. The living room and kitchen are shared spaces.

Our objective is to provide sick children with the ability to have their parents, brothers and sisters at their side during the treatment period and/or hospitalisation because we truly believe that medical treatments are more efficient when a child is surrounded by his or her family.



PROCEDURE FOR YOUR VISIT

Admission

Parents who wish to stay in the flat are admitted only upon recommendation of the Paediatrics Department of the Sion Hospital. The duration of their stay is determined based on the length of their child's hospital stay.

The Paediatrics Department will provide you with an envelope containing:

- the 'Identity – Flat for the parents of children in hospital' form;
- the 'Dr Emmanuelle de Wolff & Kiwanis' flat guide;
- electronic passkeys to access the flat;
- the pass to access the Sion Hospital car park (if requested);
- Access map.

You will be asked to sign a document confirming the receipt of this envelope.

End of stay in the flat

Your stay in the flat will end on the day that your child is discharged from the hospital. Please deposit the electronic passkeys and the parking pass to the main reception of the Sion Hospital.

On the back of this document, you will find the telephone numbers you may need in case of any questions or problems during your stay.

THE 'DR EMMANUELLE DE WOLFF & KIWANIS' FLAT

Cost and parking charges at Sion Hospital

The cost of accommodation is CHF 25 per night per family.

This price includes parking in the Sion hospital car park. Families will be issued with a parking badge.

The flat does not have a parking space.

Invoicing

An invoice will be sent to your home after the child's stay in hospital.

Location

'Athéna' building, **Route de Préjeux 50, 1950 Sion**

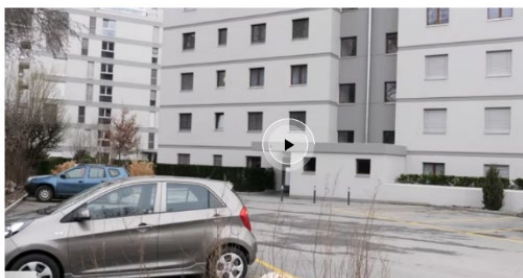
'Dr Emmanuelle de Wolff & Kiwanis' flat, on the **2nd floor**

The flat is only **7-minutes' walking distance from the Sion Hospital.**

Location map - access on foot or by car from Sion Hospital



Virtual tour of the flat



The flat

3 private bedrooms

All 3 bedrooms are private and each includes an ensuite bathroom. Bed linens and bath towels are provided and are replaced every 7 days.

- **Bedroom n° 1:** 2 bedrooms (max. 2 adults, 1 child and 1 infant)
- **Bedroom n° 2:** max. 2 adults
- **Bedroom n° 3:** max. 2 adults

A lockable cabinet, located in the bedroom or in the hall, is available. To prevent theft, the cabinets and the bedrooms must be locked when you leave the flat.

In order to ensure a friendly and pleasant environment, we ask that you remain quiet, keep the area clean and only store your personal belongings in your room.

Common spaces

Common spaces, such as the kitchen, living room, dining room and the spacious terrace, are to be shared with the other families.

Living room

With television and Wi-Fi access.

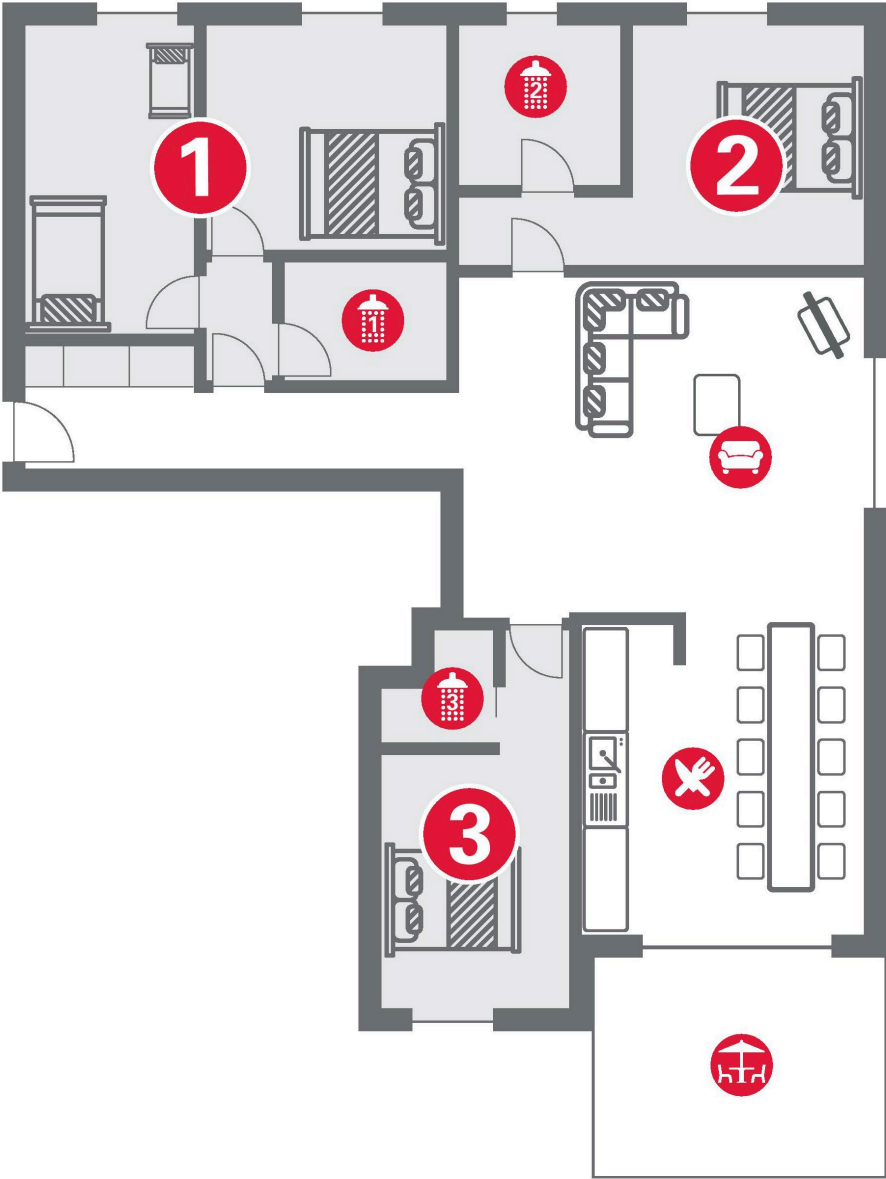
Furnished kitchen and dining room

- You are responsible for your own food.
If you place it in the refrigerator, please keep it all together so that other parents also have room for theirs.
- Please wash the dishes after each use (there is a dishwasher available).
- A washing machine and a dryer are at your disposal.

Terrace

- Please keep the sliding door closed.
- Please do not lean over the railing.
- Children are under your own responsibility.

Flat's plan



RULES AND INSTRUCTIONS

Right of access

Only parents admitted on the recommendation of the Paediatrics Department are authorised to access the flat.

Visitors and/or external persons will not be admitted.

Pets (dogs, cats, etc.) are not permitted.

Maintenance and cleaning

Maintenance of the bedroom and the kitchen as well as removing kitchen waste is the responsibility of the tenant during his or her stay.

Upon departure, the accommodation must be restored to a condition equal to that which was presented upon the tenant's arrival.

A washing machine and a dryer are available in the flat. The appliances must be used correctly and cleaned after each use.

Common space is serviced once per week by the building's concierge.

Waste management

Containers are located outside.

Material damage

Any damage to the interior of the flat must be reported immediately by telephone to the Technical Repair Department of the Sion Hospital (+41 (0)27 603 87 30).

Intentional damage is invoiced to the tenant at cost.

No smoking permitted

Smoking in the bedrooms and in the common area is strictly prohibited.

Liability in case of theft

The Valais Hospital accepts no liability in case of theft.

CONTACTS

For questions relating to your child's stay at the hospital:

Paediatrics Department, Sion Hospital

+41 (0)27 603 41 65

Neonatology Section, Sion Hospital

+41 (0)27 603 41 75

For questions relating to the flat:

Administrative Management (business hours)

+41 (0)27 603 97 97

Reception desk of the 'Athéna' building

+41 (0)79 961 02 16

Virtual tour of the flat

« Dr Emmanuelle de Wolff & Kiwanis»

